

The Crane Assembly

G.B. Crane Vineyard
St. Helena - Napa Valley
1885



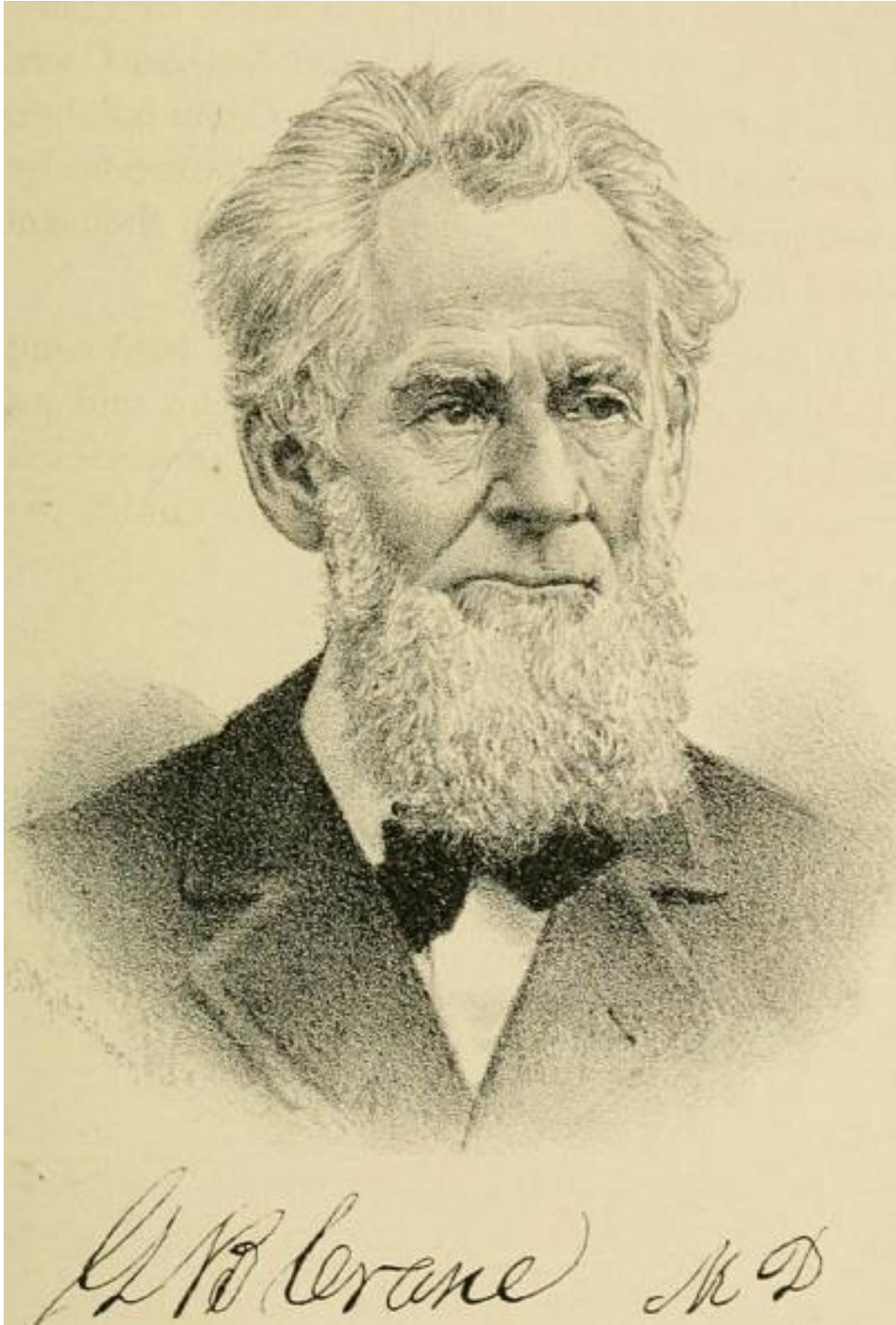
THE CRANE ASSEMBLY
G.B. CRANE VINEYARD

Founded in 2012 by Dave Phinney when he purchased one of Napa Valley's historic viticultural landmarks. A 6.5-acre vineyard that was planted by the famous Dr. George Beldon Crane, or most commonly known as "Dr. Crane" in the 1860's.

Dave has now passed the torch to Vail Jr. and Leslie Miller. It is now their turn to be stewards and caretakers of this heritage site that dates back 165 years.



Who was Dr. Crane? A true Napa Pioneer

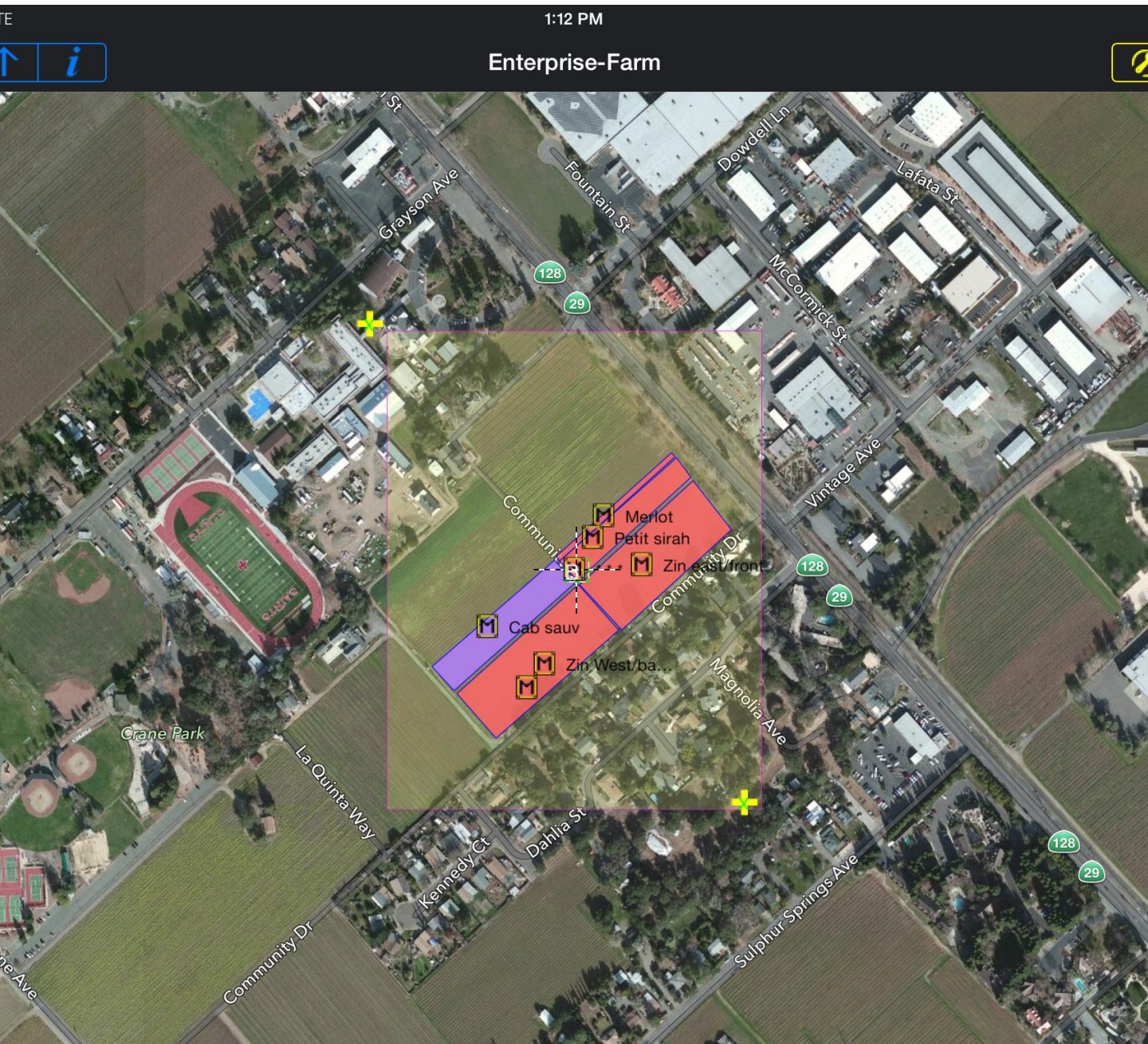


- Country Doctor from New York. Born in 1806.
- Had a sense of adventure having lived short stints in Alabama and Missouri
- In early 1850's he found himself on a boat sailing around South America and landing in San Francisco in 1852.
- Spent 3 years in the Santa Clara Valley and finally settled in St. Helena in 1855 where he purchased 300+ acres.
- First person to plant *Vitis Vinifera* "European Varieties" in Napa Valley in 1858.



THE CRANE ASSEMBLY

G.B. CRANE VINEYARD



8-acre property with 6.5 planted acres.

1.3 Acres of Cabernet Sauvignon

.3 Acres of Merlot

.9 Acres of Petite Sirah

4 Acres of Old Vine Zinfandel

Dates back to 1885 making it the one of the
two oldest vineyards in Napa Valley per the
Historic Vineyard Society

G.B. Crane Vineyard

One of 2 vineyards in Napa Valley with plantings that date back to the 1880s



We make 2 wines from our Estate
and a 3RD wine from Purchased
Fruit



G.B. Crane Vineyard Cabernet Sauvignon

G.B. Crane Vineyard el Coco Red Wine

Disciples Red Wine

Disciples Red Wine

Zinfandel based blend from heritage sites throughout Napa Valley.

Tofanelli Vineyard – Old school farmers in Calistoga that have been farming their estate since 1929.

Morisoli Vineyard – 5th Generation farming family that date back to 1890's



G.B Crane Vineyard el Coco Red Wine

Inspiration for our little operation

Old Vine Zinfandel/Petite Sirah Blend

100% Estate

Carries on the tradition that was started here 130+ years ago





Old Vines at the
G.B. Crane Vineyard after pruning and mowing.





Weeding by hand
to prevent the use
of pesticides and
herbicides

G.B. Crane Vineyard Cabernet Sauvignon

Big, opulent and mouth coating. The St. Helena AVA lends itself to making wines of big personality.

We were originally going to craft one single wine off the property, but the Cabernet was so massive it was deserving of its own bottling.

The 1 acre of Cabernet Sauvignon on the G.B. Crane Vineyard was planted back in 1995



G.B. Crane Vineyard Cabernet Sauvignon

